

PANTUM

PRINT BIGGER, BRIGHTER, AND BETTER

ULTRA 270/330/420 SERIES

BM270ADN / BM330ADN / BM420ADN





ULTRA 270/330/420 SERIES

Pantum's A3 mono multifunction printer is the ultimate solution for SMB users seeking efficient office work. It combines printing, copying, and scanning capabilities, offering a user-friendly printing solution. This printer features excellent print quality, high productivity, a user-friendly operation interface, powerful paper handling capabilities, stable performance, reliable security, and optional tools to meet high flexibility and efficiency. This means you now have the freedom to choose a convenient and efficient way to work, ultimately saving you time and resources.

【Copy/Print】

BM420ADN: 35 pages/minute

BM330ADN: 30 pages/minute

BM270ADN: 25 pages/minute

【Scan】

Mono 55 pages/minute

【Print resolution】

Standard 600 * 600dpi

Maximum 1200 * 1200dpi

【Control panel】

7-inch color touchscreen

【ADF capacity】

110 pages

【Paper handling】

Standard 500 pages

Maximum 2096 pages

HIGH PRODUCTIVITY UNLEASHED



Provides quick start mode, the operation panel is ready in 6 seconds.



Preheats in less than 28 seconds.



High-speed scanning with a high-capacity automatic document feeder. Up to 55ppm scanning speed, 110-page large capacity ADF Support automatic conversion of non-standard size originals to standard size.

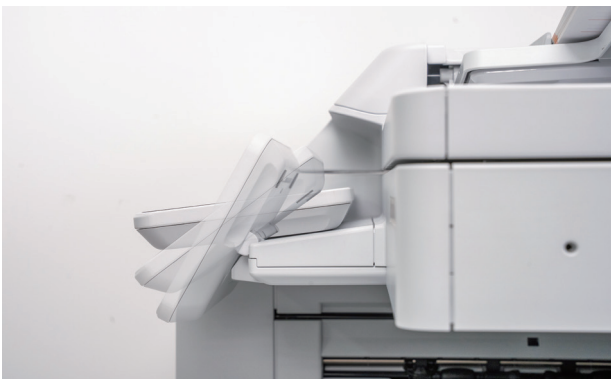


Supports USB printing and scanning to USB, which can improve operational efficiency.



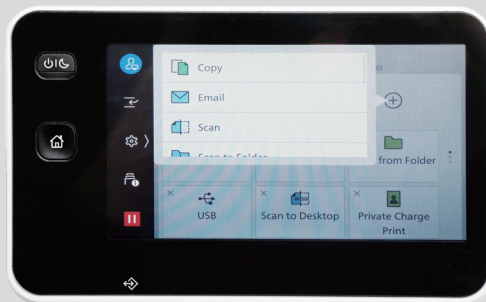
Various combinations, high productivity.

SIMPLICITY OF EFFORTLESS OPERATION



7-inch color touchscreen, adjustable operation panel

Different colored lights notifications when a job is completed or an error occurs. Reminders and alarms provide subtle sound notifications for easy identification.



Simple and clear UI design

Icons are evenly distributed and easy to identify. The home screen supports personalization for easy access to commonly used functions. Commonly used settings are easily fixed and support registration of frequently used or repeated tasks.

Standard RADF

Automatic duplex copying and scanning. Support automatic deflection correction to ensure correct paper copying and scanning.



Paper post-processing function

Staple, staple-free staple, saddle staple, crease and other functions, providing users with more choices.

QUICK PRINTING AT YOUR FINGERTIPS



- **Secure printing:** The machine can only issue jobs after entering the password set by the user.
- **Automatic reset:** If the machine does not perform any operation for a while, it will automatically reset to the default setting state. Prevent printing errors due to the previous user's settings not being modified.
- **Authentication function (preventing unauthorized access):** Manage user permissions by system administrator and logged-in user.
- **Information encryption:** The communication path is encrypted using SSL/TLS or IPsec, supports SMBv3.

UNCOMPROMISED PRINTING QUALITY



High resolution

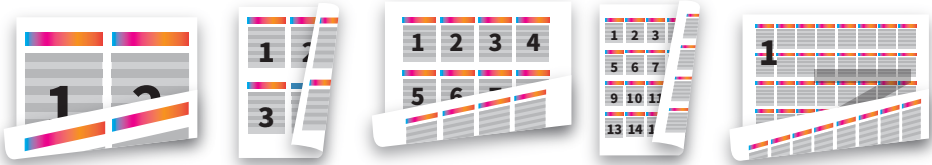
LED print head with resolutions up to 1200×1200 dpi (mono).



Automatic correction

Ensure scanning quality and support automatic correction.

GREEN PRINTING EFFICIENT PERFORMANCE



- Equipped with a space-saving and energy-saving LED print head.
- Optimize power consumption by utilizing the smart power-saving feature to individually power the required components based on customer usage patterns.
- Staple-free binding helps reduce waste and provides peace of mind where security or contamination is a concern.
- Print, scan, and multi-sheet in one printing helps reduce paper consumption.

EXTENDED FUNCTIONS FOR DIVERSE NEEDS



Multi-page copying

Supports 2in1, 4in1, and 8in1 modes. Free to adjust the layout order and original placement direction.

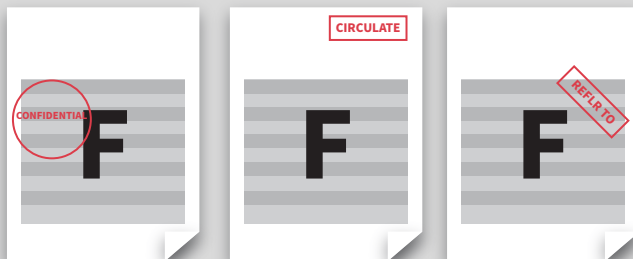
Watermark copy

Supports adding watermarks to your copies through the printer control panel's watermark copying function.



Booklet printing

Supports personalized booklet printing settings. Users can set paper size, binding edge settings, etc.



Watermark printing

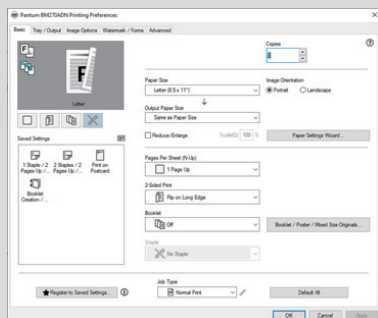
Create and use watermarks when printing.

It supports the customized setting of the watermark. This function can be used as an anti-counterfeiting mark and a source of copyright for explanatory files to meet different file printing needs.



Delayed printing

After sending the print job from the driver, you can enter the actual time to print, and it will print at a specific time.



More scanning destination

Supports scanning to USB flash drive, Email, SMB, FTP, SFTP, Folder.



ULTRA SERIES

ULTRA 270/330/420 SERIES



Product	BM270ADN	BM330ADN
Print		
Print speed	25ppm	30ppm
First print out time	10.4s	9.1s
Recommended monthly page volume	4,000 pages	6,000 pages
Max. monthly duty cycle	37,000 pages	52,000 pages
Printer language	PCL5/PCL6	PCL5/PCL6
Processor speed	Dual Core,1296MHz	Dual Core,1296MHz
Memory	4GB	4GB
Control panel	7-inch touch screen	7-inch touch screen
Auto duplex print	Yes	Yes
NFC function	No	No
Copy		
Copy speed	25ppm	30ppm
First copy out time	Platen: 4.5s; DADF: 7.5s	Platen: 4.5s; DADF: 7.5s
Max. copy pages	1 - 999 pages	1 - 999 pages
Copy reduce/enlarge settings	25% - 400%	25% - 400%
Scan		
Scanner type	Flatbed+RADF	Flatbed+RADF
ADF capacity	110 pages	110 pages
Scan speed	55ppm	55ppm
Paper Handling		
Paper input capacity	500 pages	500 pages
Multipurpose tray capacity	96 pages	96 pages
Optional input paper tray	PT-270: 500 pages PT-270H: 1500 pages PT-270X: 500 pages	PT-270: 500 pages PT-270H: 1500 pages PT-270X: 500 pages
Media Types	Bond, Plain, Recycled, Plain Reload, Custom, Heavy, Labels, Envelopes	Bond, Plain, Recycled, Plain Reload, Custom, Heavy, Labels, Envelopes
Media sizes	A6, A5, A4, A3, B6, B5, B4, 5.5×8.5", 7.25×10.5", 8×10", 8.5×11", 215×315mm, 8.5×13", 8.5×14", 11×15", 11×17", A4-Cover, Letter-Cover (9x11"), 16K, 8K, Post card, Double post card, Envelop	A6, A5, A4, A3, B6, B5, B4, 5.5×8.5", 7.25×10.5", 8×10", 8.5×11", 215×315mm, 8.5×13", 8.5×14", 11×15", 11×17", A4-Cover, Letter-Cover (9x11"), 16K, 8K, Post card, Double post card, Envelop
Media weight	Standard paper input tray: 60-256g/m ² Multipurpose tray: 60-216g/m ² Optional paper input tray: 60-256g/m ²	Standard paper input tray: 60-256g/m ² Multipurpose tray: 60-216g/m ² Optional paper input tray: 60-256g/m ²
Others		
Product dimensions (W*D*H)	590*659*771 mm	590*659*771 mm
Product weight	51.74kg	51.74kg
Power consumption	Maximum: 1920W; Ready: 93W; Sleep: 0.4W	Maximum: 1920W; Ready: 93W; Sleep: 0.4W
Interface	Hi-speed USB2.0/3.0 Device Ethernet100Base-TX/10Base-T/1000Base-T (Std)	Hi-speed USB2.0/3.0 Device Ethernet100Base-TX/10Base-T/1000Base-T (Std)
Supplies		
Type	Separate	Separate
Starter consumable	TO-2600H: 30000 pages DO-2600: 70000 pages	TO-2600H: 30000 pages DO-2600: 70000 pages
Standard consumable	DO-2600: 82000 pages DO-2600: 95000 pages	DO-2600: 82000 pages DO-2600: 95000 pages



ULTRA SERIES

ULTRA 270/330/420 SERIES

Product	BM420ADN
Print	
Print speed	35ppm
First print out time	9.1s
Recommended monthly page volume	8,000 pages
Max. monthly duty cycle	69,000 pages
Printer language	PCL5/PCL6
Processor speed	Dual Core,1296MHz
Memory	4GB
Control panel	7-inch touch screen
Auto duplex print	Yes
NFC function	No
Copy	
Copy speed	35ppm
First copy out time	Platen: 4.5s; DADF: 7.5s
Max. copy pages	1 - 999 pages
Copy reduce/enlarge settings	25% - 400%
Scan	
Scanner type	Flatbed+RADF
ADF capacity	110 pages
Scan speed	55ppm
Paper Handling	
Paper input capacity	500 pages
Multipurpose tray capacity	96 pages
Optional input paper tray	PT-270: 500 pages PT-270H: 1500 pages PT-270X: 500 pages
Media Types	Bond, Plain, Recycled, Plain Reload, Custom, Heavy, Labels, Envelopes
Media sizes	A6, A5, A4, A3, B6, B5, B4, 5.5×8.5", 7.25×10.5", 8×10", 8.5×11", 215×315mm, 8.5×13", 8.5×14", 11×15", 11×17", A4-Cover, Letter-Cover (9x11"), 16K, 8K, Post card, Double post card, Envelop
Media weight	Standard paper input tray: 60-256g/m ² Multipurpose tray: 60-216g/m ² Optional paper input tray: 60-256g/m ²
Others	
Product dimensions (W*D*H)	590*659*771 mm
Product weight	51.74kg
Power consumption	Maximum: 1920W; Ready: 93W; Sleep: 0.4W
Interface	Hi-speed USB2.0/3.0 Device Ethernet100Base-TX/10Base-T/1000Base-T (Std)
Supplies	
Type	Separate
Starter consumable	TO-2600H: 30000 pages DO-2600: 70000 pages
Standard consumable	DO-2600: 82000 pages DO-2600: 95000 pages

Remark:

1. The maximum monthly print load is the range of pages to help customers evaluate product offerings based on the average number of pages customers are prepared to print on the device each month. Customers are advised that the number of pages printed per month should be within the device's recommended range for optimum performance. In addition, other factors that should be considered include consumable replacement intervals, paper loading intervals, print speeds, and typical applications of the customer.
2. This resolution specification cannot be displayed on the official website or any promotional materials, and is only used as a bidding specification.
3. The paper capacity is calculated according to the 75g/m² standard test paper. If the paper thickness or weight is different, the capacity will be affected.
4. The output tray specifications are affected by the printing environment, paper brand, paper weight, etc., and the actual specifications may vary.
5. Cartridge capacity is the average yield of the toner cartridge in test one-sided (single-sided) mode for continuous printing, based on the ISO/IEC 19752 standard for color machines.

Actual yields may vary based on device speed, paper size and orientation, toner coverage, tray source, percentage of black-only printing and average print job complexity, among other factors.

OPTIONAL PARTS



Optional paper tray

1. PT-270: 500 pages
2. PT-270H: 1500 pages
3. PT-270X: 500 pages with cabinet

Finisher

1. PF-270: Staple
2. PF-270G: Gap Filler
2. PF-270X: Staple, staple-free
3. PK-270P: Hole punch module
4. PK-270B: Saddle stapling unit